



GAT MONTHLY MEMBERSHIP PROGRESS REPORT

Results as of: 6/30/2023

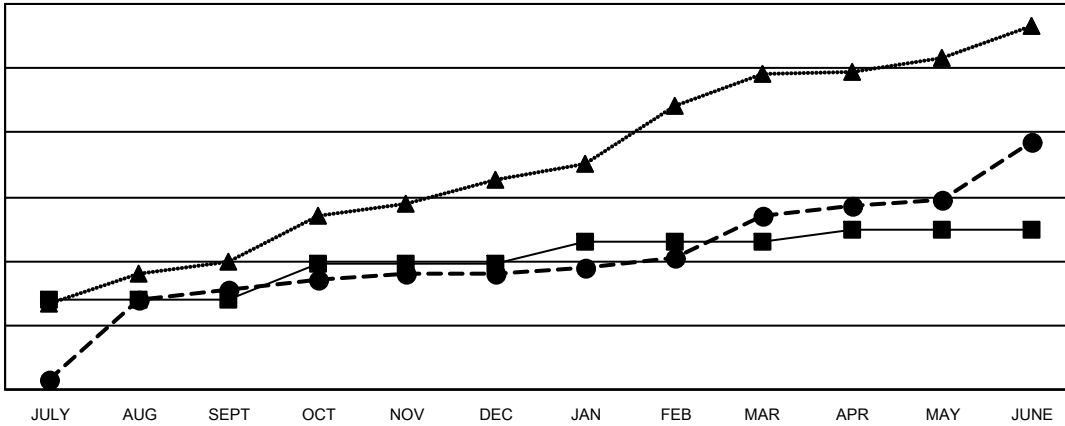
Multiple District 320

LOCATION: INDIA

Clubs			
RESULTS FOR 2022-2023			
QUARTER	NEW CLUB GOAL	NEW CLUBS	DROPPED CLUBS
JULY/AUG/SEPT	28	31	32
OCT/NOV/DEC	11	5	35
JAN/FEB/MAR	7	18	13
APR/MAY/JUNE	4	23	28

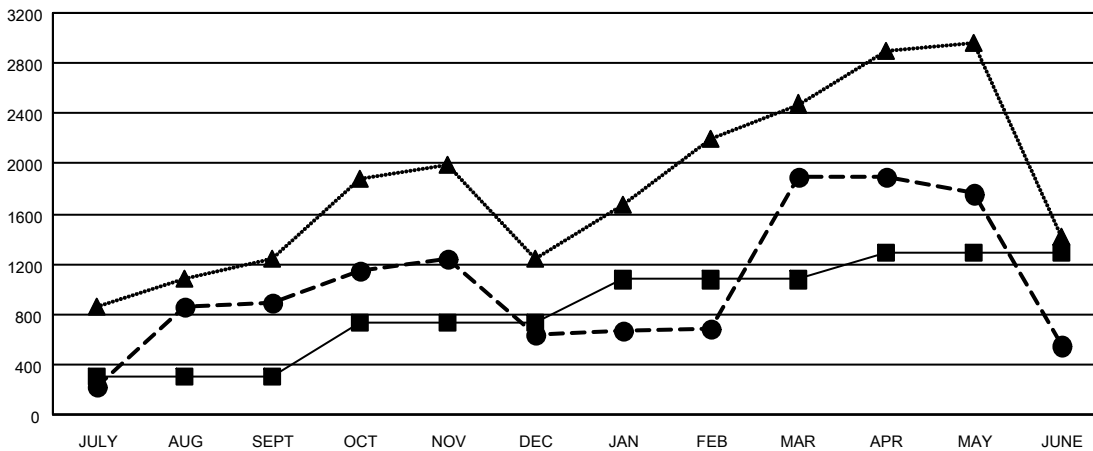
Members			
RESULTS FOR 2022-2023			
QUARTER	MEMBER GROWTH NET GOAL	MEMBER GROWTH ACTUAL	DROPPED MEMBERS ACTUAL (including transfers)
JULY/AUG/SEPT	305	1,607	608
OCT/NOV/DEC	430	1,179	1,387
JAN/FEB/MAR	340	1,720	330
APR/MAY/JUNE	210	1,336	2,588

GOALS AND ACTUAL NEW CLUBS CUMULATIVE



- - CURRENT YEAR GOALS FOR NEW CLUBS
- - CURRENT YEAR ACTUAL NEW CLUBS
- ▲ - LAST YEAR ACTUAL NEW CLUBS

GOALS AND ACTUAL MEMBERS CUMULATIVE



- - MEMBER GROWTH NET GOAL
- - MEMBER GROWTH ACTUAL
- ▲ - LAST YEAR MEMBERSHIP ACTUAL

DROPPED CLUBS: 107	487 CLUBS OF 721 ADDED 1 OR MORE NEW MEMBERS	GENDER DISTRIBUTION
DROPPED MEMBERS	CLICK HERE FOR CUMULATIVE MEMBERSHIP DATA	MALE 15,771 (72.69%)
DECEASED 68		FEMALE 5,919 (27.28%)
CLUB CANCELLED 1,016		NON BINARY 1 (0.00%)
OTHER 3,829		PREFER NOT TO ANSWER 5 (0.02%)
TOTAL 4,913		TOTAL FAMILY UNIT MEMBERS 11,032
		FAMILY MEMBERS PAYING HALF DUES 6,446